



*1350 CHIYODA DRIVE | WEBSTER, NY 14580 | 585.872.7103 |
PARKSANDREC@CI.WEBSTER.NY.US
CI.WEBSTER.NY.US/104/PARKS-RECREATION*

2023 Park Improvement Project First Responders Park

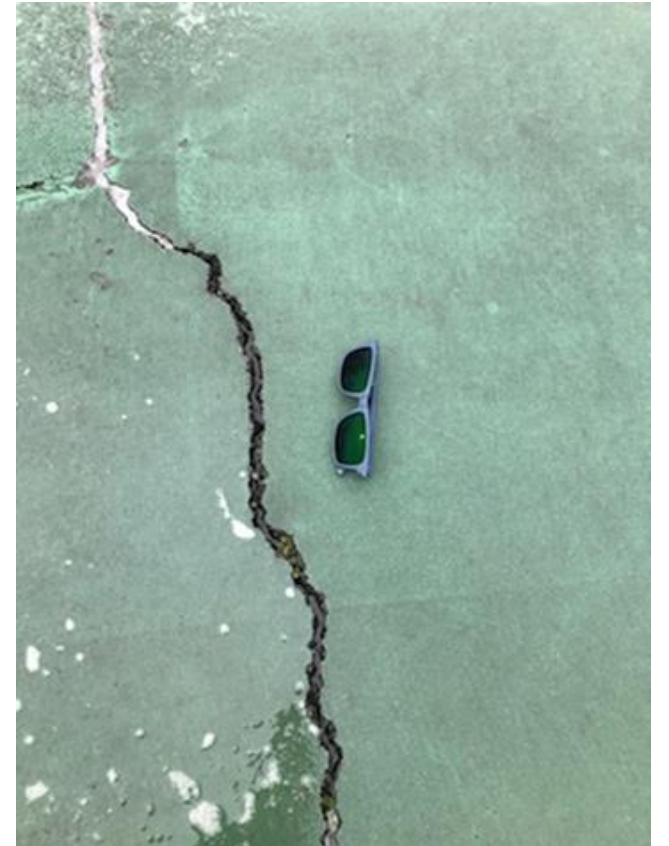
1 Tennis-Pickleball Court and
4 dedicated Pickleball Courts





Existing Conditions of the Fencing and Courts

- Courts are over 30 years old
- 2 existing layers of asphalt
- Recent repair, sections were cut out and resurfaced
- Extensive surface cracks up to 1+ inch wide
- Fencing damaged and stretched out, posts leaning





Existing Conditions of the Fencing and Courts





Scope of Work and Timeline

- Work projected to begin late June
- Webster Parks and Recreation : Removal of existing fencing and posts
- Webster Highway Dept. : Removal of existing surfaces
- Paving Contractor : New asphalt bases, 15 – 30 day cure needed
- Fence Contractor : Install Tennis / Pickleball posts sleeves
- Fencing Contractor : Install Posts, Gates, Fencing
- Court Surfaces Contractor : Installs finished surface and painted lines



Additional Project Details

- Paving and Court Surface operations are interdependent
 - Approx \$99k, 100k budgeted towards project
 - Equalis Group – Cooperative Purchasing
- Fencing will be Public Bid
 - A wide range of estimates and specifications were shared in the planning stages
 - Estimate of \$40k to complete Fencing