

Town of Webster
Engineering and Highway Departments



Town Wide Drainage District



Webster is an MS4: Municipal Separate Storm Sewer System



*Town of Webster
Engineering and Highway Departments*





MS4 Program

MS4's are required to develop a stormwater management program that will reduce the amount of pollutants carried by stormwater during storm events to waterbodies to the "maximum extent practicable."

The goal of the program is to improve water quality and recreational use of waterways.

The ENTIRE Town is bound by the requirements of this program.

*Town of Webster
Engineering and Highway Departments*



The Stormwater Coalition of Monroe County

- Webster is partnered with the Stormwater Coalition of Monroe County
- Established in 2000
- 29 Municipal Members
- Supports Town efforts to execute the Program
- Assists with Annual Reporting, Training, and Reporting



*Town of Webster
Engineering and Highway Departments*

Program Elements: Six Minimum Control Measures

MCM1: Public Education

MCM2: Public Participation

MCM3: Illicit Discharge Program

MCM4: Construction Stormwater Management

MCM5: Post-Construction Stormwater Management

MCM6: Municipal Pollution Prevention Program



*Town of Webster
Engineering and Highway Departments*



MCM1: Public Education

- Develop program to educate residents & businesses
- Make educational documents publicly available
- Present at school and community events
- Promote the “H2O Hero” campaign
- Post signage in parks and near stormwater features

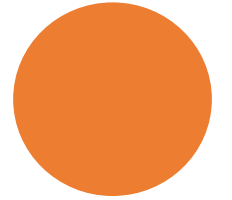


*Town of Webster
Engineering and Highway Departments*



MCM2: Public Participation

- Present the Annual Report to the Town Board (5/12/22)
- Household Hazardous Waste Collections
- Storm Drain Marking
- Promote rain barrel construction and use



*Town of Webster
Engineering and Highway Departments*



MCM3: Illicit Discharge Program

- Discover and eliminate illicit discharges
- Inspect all outfalls once every 5 years (Town of Webster has over 600)
- Train staff and educate public
- Maintain records – mapping, inspections, detections, etc.

*Town of Webster
Engineering and Highway Departments*



MCM4: Construction Stormwater Management

- Train staff: permit requirements, erosion control, design standards
- Review stormwater design and construction controls.
- Permit activity
- Review SWPPP's (15-20 per wk)
- Inspect construction sites
- Enforce violations

*Town of Webster
Engineering and Highway Departments*



MCM5: Post-Construction Stormwater Management

- Train staff: permit requirements, erosion control, design standards
- Inspect and maintain municipal stormwater infrastructure and facilities
 - ✓ Stormwater Ponds
 - ✓ Drainageways
 - ✓ Piping
 - ✓ Catchbasins and manholes
- Coordinate, review, and enforce Commercial / Privately Owned annual stormwater inspections.

MCM6: Municipal Pollution Prevention Program

- Develop and implement a pollution prevention & good housekeeping program for municipal operations and facilities.
- Train staff on the program
- Perform self assessments



*Town of Webster
Engineering and Highway Departments*

Upcoming Changes – Draft DEC Permit Published

- Catch Basin Inspections: Perform, document, and keep records on every catch basin (inspect every 5 years approx. 4,500 in Town)
- Increased construction inspection frequency by municipality
- Develop SWPPP's for municipal operations (highway garage and parl department) and perform inspections
- Additional staff training (Highway, Parks, Engineering): Illicit discharges, ponds, outfalls, SWPPP's, sediment and erosion control, housekeeping, best practices, operations
- Additional mapping requirements and tracking
- Additional development of process and procedure and record keeping
- Additional public involvement and education. More responsibility on the MS4 vs the Coalition.

*Town of Webster
Engineering and Highway Departments*



Upcoming Changes – Examples of Estimated \$

- \$15-20,000/yr: Inspection, documentation, and record keeping for catch basins every 5 years (approx. 4,500 in Town \therefore 900/yr)
- \$12,000/yr: Increased construction inspection frequency
- \$30,000 capital plus annual \$2,500: Develop SWPPP's for municipal operations (highway garage and parks department) and perform inspections
- \$6,000/year: Additional staff training
- \$2-5,000/year: Additional mapping requirements and tracking



Purpose of a Drainage District

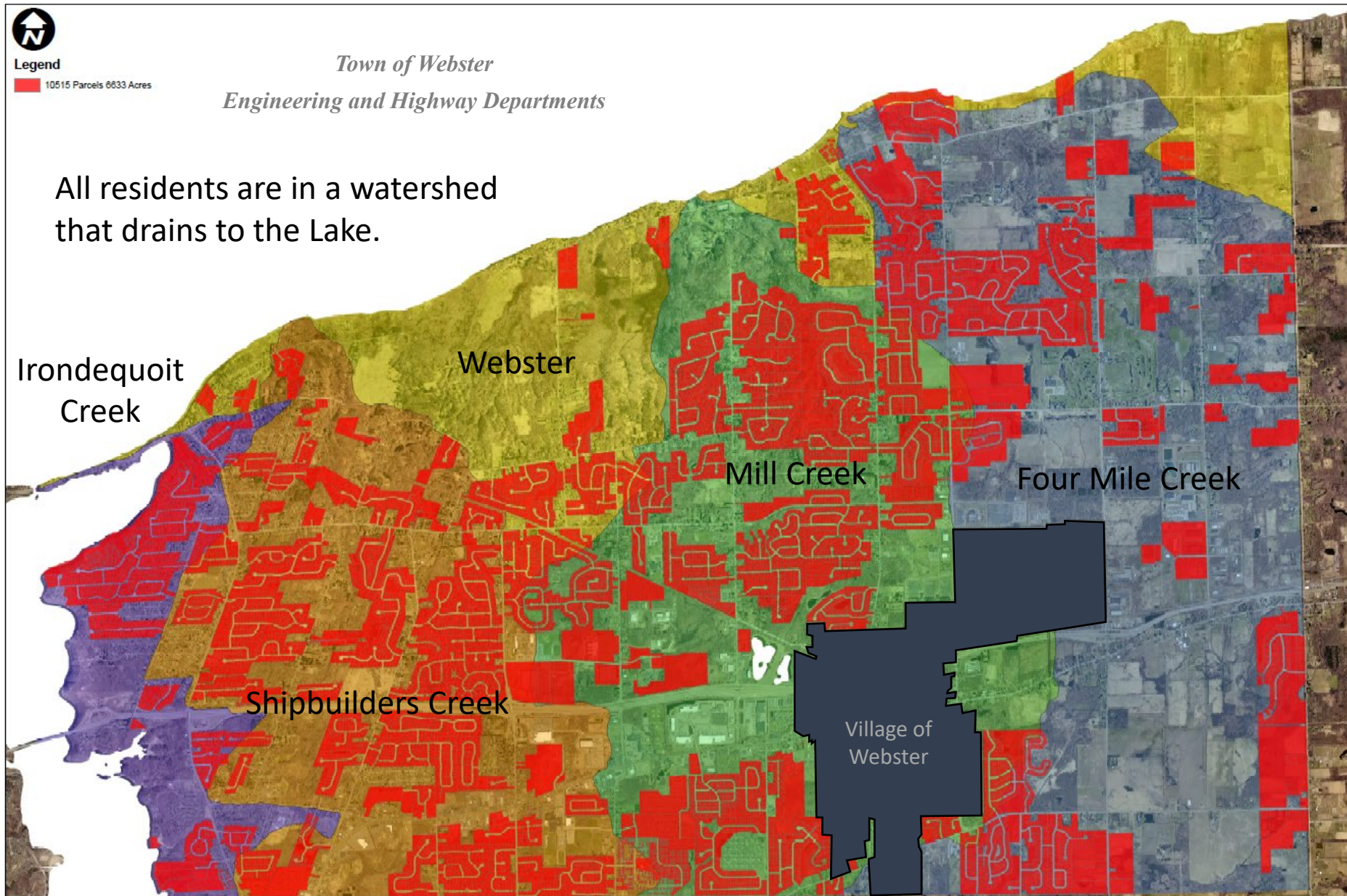
1. Fund the MS4 requirements of MCM5: Post-Construction Stormwater Management, imposed by the Federal EPA and NYSDEC.
2. Execution:
 - Maintain **common** waterways and infrastructure.
 - Review maintenance of commercial treatment facilities.
 - Review new development plans for conformance with state standards.
 - Annual reporting and documentation of drainage facilities.

A **common** drainageway is one that receives runoff from multiple residents **and** is either under Town Easement or under the jurisdiction of another agency.



Town of Webster
Engineering and Highway Departments

Town Watersheds and Drainage Districts





Current Drainage Districts

- Drainage districts were first created in the 1980s to support maintenance and reporting efforts by the Town.
- Approximately 78% of Town residents are currently in a drainage district.
- The 22% of residents that are not currently in a drainage district have been receiving the benefit of drainageway maintenance but not contribute to the cost.
- Commercial properties are required to maintain their own individual stormwater facilities but still discharge to common drainageways and therefore still need to contribute.

*Town of Webster
Engineering and Highway Departments*

Resident Impacts & Opportunities

- Annual fee on your tax bill. In 2021 the fee was \$42.00.
- If there is an area that could be enhanced to improve drainage for multiple residents, a plan can be made to establish easements and have the area maintained by the Town after the initial improvement is completed.
- The incorporation of the remaining 22% of residents into a Town Wide Drainage District will allow our maintenance cycles to be shortened which will provide a more timely response to issues that are identified.
- The expansion of the district will open opportunities for drainage improvements that may not have been there before. This will increase the Town's ability to seek grant funds for drainage projects.

Town of Webster

Engineering and Highway Departments





Next Steps

- Begin the district creation process so that a board resolution can be presented and voted on prior to September.
- Improve maintenance and compliance plans for our MS4 program in 2023.



Questions / Comments



*Town of Webster
Engineering and Highway Departments*